

# LK19

## 系列 (经济型)

I. 橡胶弹性体联轴器

LK19 Series (Economic Type) I. Keyway Type

### 特点 Features

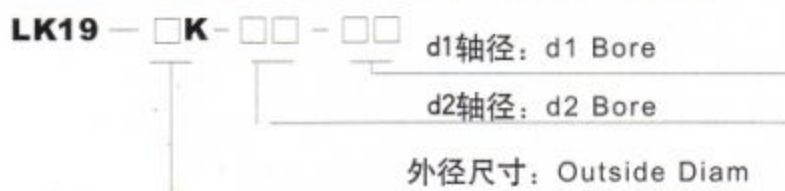
- 结构简单, 重量轻、惯量低
- 安装容易
- 橡胶弹性体
- 对心容易
- 适用于普通小功率马达
- 键槽联接
- Simple structure, light weight, low inertia
- Easy to install
- Rubber sleeve
- Easy to align
- Applicable to low power general motor
- Keyway connect



主体: 铝合金材料  
Body: Aluminum Alloy



### 选型举例: Ordering Information

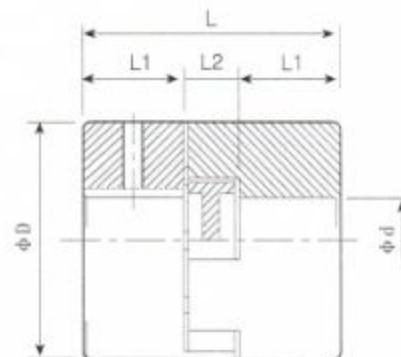


### 例: LK19-27K-1012

- LK19: 系列号, 材料为铝合金  
27: 外径尺寸: 27mm, 定位螺丝固定  
10: d1轴径为: 10mm  
12: d2轴径为: 12mm

#### Example: LK19-27K-1012

- LK19: Series NO, Material :Aluminum Alloy  
27: Outside Diam: 27mm , Keyway Type  
10:d1 Bore :10mm  
12:d2 Bore :12mm



## 外型尺寸 Dimensions

单位 (unit): mm

型号 Model	轴径 Bore $\varnothing d1 \varnothing d2$	$\varnothing D$	L	L1	L2	M	拧紧力矩 Wrench Torque (N.m)
LK19-27K-□□□□	5 6 8 10 12 14 16	27	44	15.5	13	M4	1.5
LK19-35K-□□□□	5 10 12 14 19 20	35	50	18.5	13	M4	1.5
LK19-45K-□□□□	10 14 18 19 20 22 24 26	45	55	21	13	M5	4
LK19-55K-□□□□	12 14 18 20 24 25 28	55	55	21	13	M5	4
LK19-55LK-□□□□	12 14 18 20 24 25 28	55	61	24	13	M5	4
LK19-66K-□□□□	14 18 20 24 28 30 32 32 35 36	66	88	35	18	M8	15
LK19-85K-□□□□	18 20 28 30 35 38 42 45 48	85	110	44	22	M8	15

## 技术参数 Specifications

型号 Model	额定扭矩 Rated Torque (N.m)	最大扭矩 Max. Torque (N.m)	最高转速 Max. Rotational Frequency (rpm)	惯性力矩 Moment of Inertia (kg·m <sup>2</sup> )	径向偏差 Errors of Eccentricity (mm)	角向偏差 Errors of Angularity (°)	轴向偏差 Errors of Shaft End-play (mm)	重量 Mass (g)
LK19-27K-□□□□	2.3	4.5	12000	$5.1 \times 10^{-6}$	0.2	1.0	±0.5	60
LK19-35K-□□□□	4.5	9	9000	$1.78 \times 10^{-5}$	0.2	1.0	±0.5	120
LK19-45K-□□□□	15	30	7000	$5.35 \times 10^{-5}$	0.2	1.0	±0.5	210
LK19-55K-□□□□	22	44	6000	$1.14 \times 10^{-4}$	0.3	1.0	±0.5	310
LK19-55LK-□□□□	22	44	6000	$1.4 \times 10^{-4}$	0.3	1.0	±0.5	358
LK19-66K-□□□□	40	80	5000	$4.33 \times 10^{-4}$	0.3	1.0	±0.7	785
LK19-85K-□□□□	75	150	4000	$1.43 \times 10^{-3}$	0.3	1.0	±0.7	1560

说明：惯性力矩和重量按最大孔径计算。

Moment of inertia and mass figures based on the maximum shaft bores