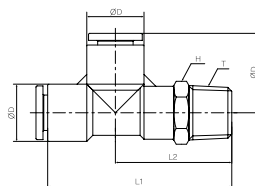


# SQ 系列

## 外形尺寸

Male Run Tee



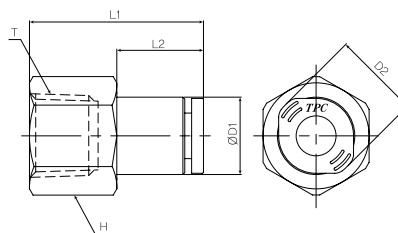
SQY Type

单位: mm

Model	Tube size	T (Thread)	D	L1	L2	L3	H
SQY 04-M5	04	M5	10.2	39.4	22.3	17.1	10
SQY 04-01S		R 1/8		41.9	24.8		10
SQY 04-02S		R 1/4		44.9	27.8		14
SQY 06-M5	06	M5	12.9	43.0	23.5	19.5	12
SQY 06-01S		R 1/8		45.5	26.0		12
SQY 06-02S		R 1/4		48.5	29.0		14
SQY 06-03S		R 3/8		49.5	30.0		17
SQY 08-01S	08	R 1/8	14.7	47.4	27.0	20.4	14
SQY 08-02S		R 1/4		50.3	29.9		14
SQY 08-03S		R 3/8		51.3	30.9		17
SQY 08-04S		R 1/2		55.8	35.4		22
SQY 10-01S	10	R 1/8	18.3	54.4	30.0	24.4	17
SQY 10-02S		R 1/4		57.4	33.0		17
SQY 10-03S		R 3/8		58.4	34.0		17
SQY 10-04S		R 1/2		62.8	38.4		21
SQY 12-02S	12	R 1/4	21.2	63.7	35.9	27.8	17
SQY 12-03S		R 3/8		64.7	36.9		17
SQY 12-04S		R 1/2		68.2	40.4		21

## 外形尺寸

Female Union



SQF Type

单位: mm

Model	Tube size	T (Thread)	D1	D2	L1	L2	H
SQF04-01	04	RC 1/8	10.2	10.0	54.0	14.0	14
SQF04-02		RC 1/4			27.0	13.5	17
SQF06-01	06	RC 1/8	12.4	14.0	24.9	14.9	14
SQF06-02		RC 1/4			27.9	13.9	17
SQF06-03		RC 3/8			29.4	13.9	21
SQF08-01	08	RC 1/8	12.7	14.7	28.1	18.1	17
SQF08-02		RC 1/4			31.1	17.2	17
SQF08-03		RC 3/8			32.1	16.1	21
SQF08-04		RC 1/2			36.0	17.0	24
SQF10-01	10	RC 1/8	17.0	18.6	28.2	16.8	17
SQF10-02		RC 1/4			31.2	16.8	17
SQF10-03		RC 3/8			32.2	15.9	21
SQF10-04		RC 1/2			35.3	15.9	24
SQF12-02	12	RC 1/4	21.0	23.5	33.5	19.6	21
SQF12-03		RC 3/8			34.5	19.6	21
SQF12-04		RC 1/2			37.5	18.5	24