

## Wear-Resistant Bucket Elevator Chains

### 耐磨升降机链

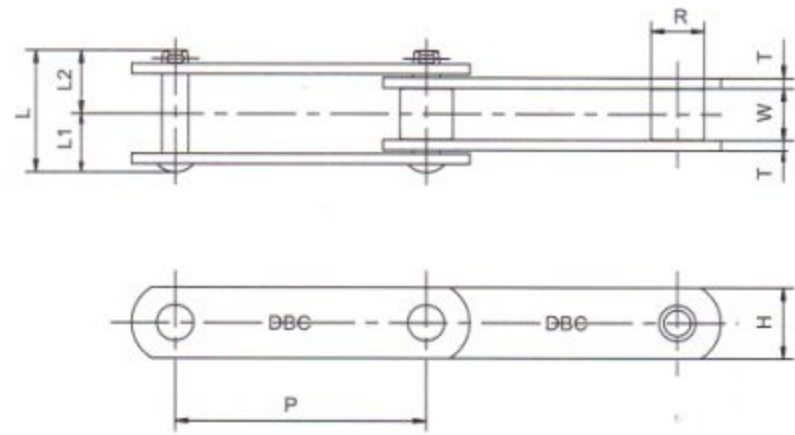
A regular wear resistant conveyor chain is made from quenched and tempered alloy steel. But this <Wear-Resistant Bucket elevator chain> is made from specially selected alloy steel for the unique combination. Dong Bo has developed a special solution after a lot of experiment. For example, components (bush, pin, roller) are ideally combined in point of dimensions, clearance and hardness. This concept enable that the chain can extend its life up to 2times that of regular wear resistant conveyor chains.

#### Applications

Cement Works, Coal Mining, Iron Works, Glass Industry, Heavy duty conveying applications, etc.

一般链条采用的是钢材的淬火、回火一般的热处理方式。超耐磨链条经过多年的试验和现场适用，东宝链条有限公司根据链条的适用条件，把销轴的表面经过处理，套筒、滚子采用适合硬度。

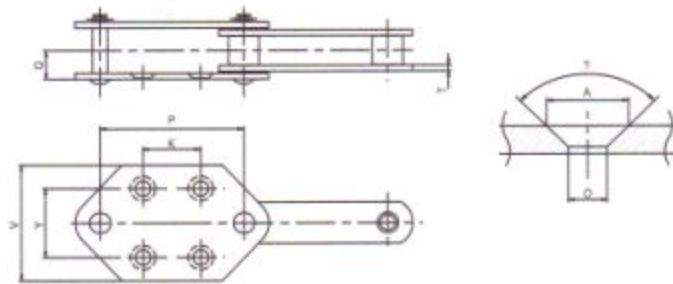
用途：水泥工业、玻璃、采矿、钢铁工业、重型运输等高度磨损的环境。



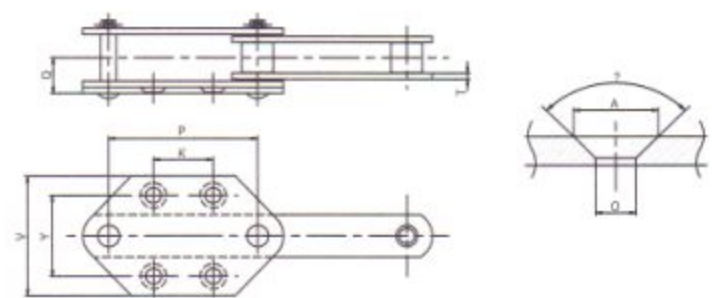
unit :mm

DONG BO Chain No.	Pitch P	Roller Dia. R	Inner width W	Plate		Pin			Avg. Breaking Load				Approx weight (kg/m)
				T	H	L1	L2	L	CN Type	CH Type	CC Type	CE Type	
DBC WB10150S	150	29	30	6.3	38.1	33	36	69	11,500	23,000	11,500	21,500	5.4
DBC WB12006S	152.4	34.9	37.1	7.9	44.5	40.5	43	83.5	19,000	28,500	19,000	28,500	8.6
DBC WB12200S	200	40.1	51.4	9.5	50.8	51.5	58	109.5	25,000	39,500	25,000	39,500	7.8
DBC WB17200S	200	40.1	51.4	9.5	50.8	51.5	58	109.5	25,000	39,500	25,000	39,500	11.6
DBC WB17250S	250	40.1	51.4	9.5	50.8	51.5	58	109.5	25,000	39,500	25,000	39,500	10.7
DBC WB26200N	200	40.1	51.4	9.5	50.8	51.5	58	109.5	25,000	39,500	25,000	39,500	16.2
DBC WB26250N	250	50.8	57.2	9.5	63.5	56	61	117	30,500	57,500	30,500	52,000	14.7
DBC WB26300N	300	50.8	57.2	9.5	63.5	68.5	61	129.5	30,500	57,500	30,500	52,000	13.9
DBC WB36250S	250	50.8	57.2	9.5	63.5	69	78	147	-	88,500	-	87,000	23.7
DBC WB36300N	300	57.2	66.7	12.7	76.2	69	78	147	-	88,500	-	87,000	22.1
DBC WB36350N	350	57.2	66.7	12.7	76.2	81	78	159	-	88,500	-	87,000	20.6
DBC WB60300N	300	70	77	12.7	90	81	84	172	-	106,000	-	96,000	29.7
DBC WB60350N	350	70	77	12.7	90	88	84	172	-	106,000	-	96,000	27.8
DBC WB60400N	400	70	77	12.7	90	88	84	172	-	106,000	-	96,000	26.4
DBC WB90350N	350	85	88	16	110	101.5	95.5	197	-	166,000	-	151,000	45.9
DBC WB90400N	400	85	88	16	110	101.5	95.5	197	-	166,000	-	151,000	43.4
DBC WB20400N	400	100	100	19	130	119.5	108	227.5	-	225,000	-	206,000	63.5

### G-4 Attachment Type



### G-4 Double Attachment - Plate Type



### G-4 Attachment Type

unit : mm

Basic Chain No.	Pitch P	Dimensions									Add. Weight Per Attachment (at every second Link spaling) (kg/m)
		V	K	Y	T	Q	A	O	Ø		
DBC	WB10150S	150	110	75	70	6.3	28.5	26	15	90i£	7.0
	WB12006S	152.4	110	75	70	7.9	35.5	26	15	90i£	11.0
	WB12200S	200	120	100	80						9.9
	WB17200S	200	120	100	80	9.5	45.5	26	15	90i£	13.9
	WB17250S	250	150	140	100			32	19		14.0
	WB26200N	200	120	100	80	9.5	48	26	15	90i£	18.3
	WB26250N	250	150	140	100			32	19	90i£	17.8
	WB36250N	250	150	140	100	12.7	60	32	19	90i£	27.5

### G-4 Double Attachment - Plate Type

unit : mm

Basic Chain No.	Pitch P	Dimensions									Add. Weight Per Attachment (at every second Link spaling) (kg/m)
		V	K	Y	T	Q	A	O	Ø		
DBC	WB26300N	300	200	170	140	12	60	38	24	90i£	22.5
	WB36300N	300	200	170	140	12	72	38	24	90i£	31.4
	WB36350N	350	240	200	170	12	72	40	28	60i£	31.2
	WB60300N	300	200	170	140	12	77	38	24	90i£	39.5
	WB60350N	350	240	200	170	12	77	40	28	60i£	38.8
	WB60400N	400	280	230	200	16	81	50	35	60i£	42.8
	WB90350N	350	240	200	170	12	89.5	40	28	60i£	57.8
	WB90400N	400	280	230	200	16	93.5	50	35	60i£	60.8
	WB20400N	400	280	230	200	16	105.5	50	35	60i£	82.2

