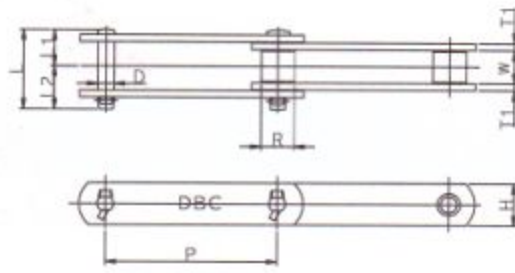


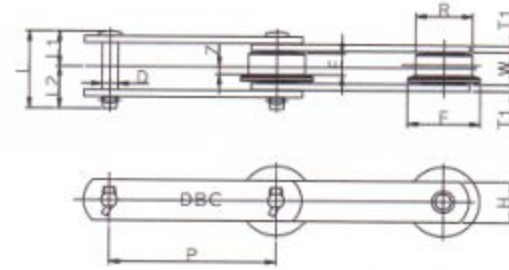


Standard Conveyor Chain I

标准型输送链条 I



S.M.N - ROLLER



F - ROLLER

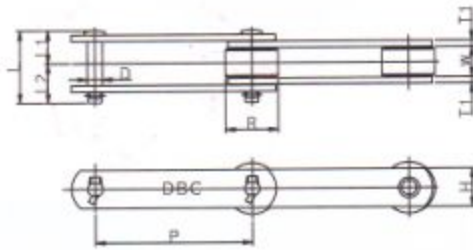
Chain Dimensions 链条规格

unit : mm

DONG BO Chain No.		Pitch P	Inner width W	Plate		Pin				Avg. Breaking Load kgf	
Basic Chain No.	Roller Type			T	H	D	L1	L2	L	Standard Series	Heavy Series
DBC 03075 03100 03150	R·F·S	75 100 150	16.1	3.2	22	7.9	17.5	19.5	37	3,000	7,100
DBC 430	R·S	101.6	22.6	4.8(5.0)	25.4	9.7	25.5	29.5	55	5,500	10,000
DBC 05075 05100 05150	S R·F·S R·F·S	75 100 150	22	4.5	32	11.1	24.6	29.6	54.2	7,000	14,500
DBC 204	S	66.27	27	6.3(6.0)	28.6	11.1	30.7	35.6	66.3	8,000	14,500
DBC 450	R·F·S·M	101.6	27	6.3(6.0)	28.6	11.1	30.7	35.6	66.3	8,000	14,500
DBC 08125 08150	R·F·S·M	125 150	27	6.3(6.0)	28.6	11.1	30.7	35.6	66.3	8,000	14,500
DBC 650	R·F·S·M	152.4	30.2	6.3(6.0)	38.1	11.1	32.3	37.3	69.6	8,000	14,500
DBC 10100 10125 10150	S·M R·F·S·M R·F·S·M	100 125 150	30	6.3(6.0)	38.1	14.3	32.7	39.2	71.9	11,500	23,000
DBC 214	R·S·M	101.6	31.6	7.9	38.1	15.9	37.2	43.7	80.9	13,000	24,500
DBC 205	S	78.11	37.1	7.9	38.1	15.9	40	46.4	86.4	13,000	24,500
DBC 6205	R·F·S·M	152.4	37.1	7.9	44.5	15.9	40	46.4	86.4	19,000	28,500
DBC 12200 12250	R·F·S·M	200 250	37.1	7.9	44.5	15.9	40	46.4	86.4	19,000	28,500
DBC 17200 17250 17300	R·F·S·M	200 250 300	51.4	9.5(10.0)	50.8	19.05	51.5	60	111.5	25,000	39,500
DBC 212	R·S·M	152.4	37.1	9.5(10.0)	50.8	19.05	44.2	57.7	96.9	21,000	39,500
DBC 26200 26250 26300 26450	S·M R·F·S·M R·F·S·M R·F·S·M	200 250 300 450	57.2	9.5(10.0)	63.5	22.2	55.2	62.7	117.9	32,000	53,000
DBC 36250 36300 36450 36600	S·M R·F·S·M R·F·S·M R·F·S·M	250 300 450 600	66.7	12.7	76.2	25.4	68	76	144	48,500	69,500
DBC 52300 52450 52600	R·F·S	300 450 600	77	16	76.2	31.8	81.5	91.5	173	54,000	105,000
DBC 60300 60350 60400	R·F·N	300 350 400	77	12.7	90	35	77	84	161	62,000	106,000
DBC 90350 90400 90500	N R·F·N R·F·N	350 400 500	88	16	110	42.0	90	100	190	95,000	166,000
DBC 120400 120600	R·N R·F·N	400 600	100	19	130	50.0	106	113	219	113,000	225,000

Note) The Stainless steel Series are up to 26000. Numbers in brackets of the Link Plate thickness indicates the Stainless steel 300 Series. The Number outside brackets is common for every series.

注: 不锈钢系列最大至26000 () 里面链板厚度指不锈钢300系列。() 外面数值适合每一种系列


R - ROLLER

DBC 26200-R A-2 2L

 Spacing of Attachment (every second link)
 附件距离 (每两节)

 Type of Attachment (A-2 Attachment)
 附件类型 (A-2型附件)

Roller Type (R-Roller Type) 滚子类型

Chain Size 链条大小

Dong Bo Chain 东宝链条

Roller Dimensions 滚子规格

unit : mm

DONG BO Chain No.		Roller Dimensions												Weight of Rollers (kg/m)							
Basic Chain No.	Roller Type	R-Roller		F-Roller					S-Roller		M-Roller		N-Roller		R-R/o	F-R/o	S-R/o	M,N-R/o			
		R	E	R	F	E	n	Z	R	E	R	E	R	E	R	E	R	E			
DBC 03075 03100 03150	R·F·S	31.8	15.5	31.8	42	12	1.8	4.3	15.9	15.5	-	-	-	-	2.7	2.3	2.8	2.4	1.9	1.7	-
DBC 430	R·S	38.1	19	-	-	-	-	-	20.1	19	-	-	-	-	4.3	-	3.0	-	-	-	-
DBC 05075 05100 05150	S R·F·S R·F·S	40	19	40	50	14	2.5	4.5	22.2	19	-	-	-	-	5.0	4.5	5.2	4.6	4.2	3.7	-
DBC 204	S	-	-	-	-	-	-	-	22.2	23	25.4	23	-	-	-	-	-	-	5.6	-	-
DBC 450	R·F·S·M	44.5	23	44.5	55	18	2.5	6.5	22.2	23	25.4	23	-	-	6.8	7.5	4.6	4.6	4.8	-	
DBC 08125 08150	R·F·S·M	44.5	23	44.5	55	18	2.5	6.5	22.2	23	25.4	23	-	-	5.5	5.8	4.0	4.0	4.2	-	
DBC 650	R·F·S·M	50.8	26	50.8	65	20	3	7	25.4	26	31.8	26	-	-	7.7	8.0	6.0	6.0	6.4	-	
DBC 10100 10125 10150	R·S·M R·F·S·M R·F·S·M	50.8	27	50.8	65	20	3	7	29	27	31.8	27	-	-	9.8	8.7	8.9	6.3	6.8	6.5	7.1
DBC 214	R·S·M	44.5	27	-	-	-	-	-	31.8	27	34.9	27	-	-	10.4	-	8.7	-	9.1	-	
DBC 205	S	-	-	-	-	-	-	-	31.8	27	-	-	-	-	-	-	10.4	-	-	-	
DBC 6205	R·F·S·M	57.2	32	57.2	70	25	3.5	9	34.9	32	38.1	32	-	-	12.1	12.4	9.3	9.3	9.6	-	
DBC 12200 12250	R·F·S·M	65	32	65	80	24	4	8	34.9	32	38.1	32	-	-	11.4	10.3	11.9	10.6	8.4	8.7	8.0
DBC 17200 17250 17300	R·F·S·M	80	44	80	100	34	5	12	40.1	44	44.4	44	-	-	18.8	16.5	19.8	17.3	12.0	11.1	12.6
DBC 212	R·S·M	69.9	32.5	-	-	-	-	-	40.1	32.5	44.4	32.5	-	-	17.1	-	12.6	-	13.1	-	
DBC 26200 26250 26300 26450	S·M R·F·S·M R·F·S·M R·F·S·M	100	50	100	125	38	6	13	44.5	50	50.8	50	-	-	25.3	22.3	26.2	23.6	16.0	14.7	17.0
DBC 36250 36300 36450 36600	S·M R·F·S·M R·F·S·M R·F·S·M	125	56	125	150	42	7	14	50.8	56	57.2	56	57.2	65	39.0	30.7	40.1	31.9	24.4	22.9	25.5
DBC 52300 52450 52600	R·F·S	140	65	140	170	49	8	16.5	57.2	65	-	65	-	-	48.8	37.5	52.5	39.3	29.7	26.2	-
DBC 60300 60350 60400	R·F·N	140	68	140	170	49	8	16.5	-	-	-	68	70	75	52.4	47.2	55.1	49.5	-	-	31.0
DBC 90350 90400 90500	N R·F·N R·F·N	170	76	170	205	56	10	18	-	-	-	76	85	86	66.9	59.0	71.6	62.8	-	-	42.4
DBC 120400 120600	R·N R·F·N	200	87	200	240	64	11.5	20.5	-	-	-	87	100	97	105.7	83.3	-	88.0	-	-	63.9

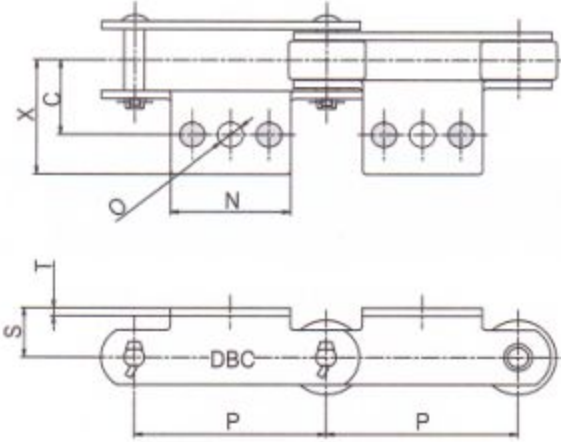
* R/o=Roller * R/o=滚子

Attachments for Standard Conveyor Chains

标准型输送链附件



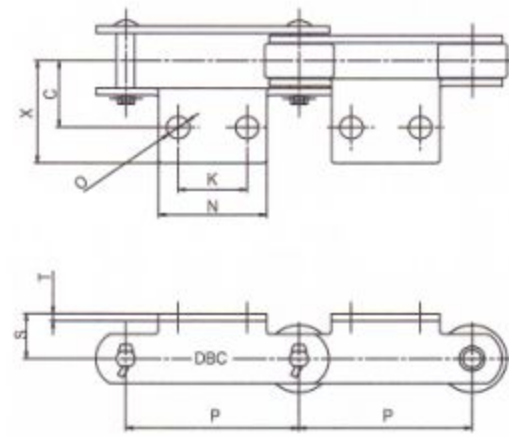
A-1 Attachment



unit : mm

DONG BO Chain No.		Pitch P	Dimensions						Add. Weight per All* (kg)	
Basic Chain No.	Roller Type		S	C	X	N	T	O		
DBC 03075	R·F·S	75								0.05
DBC 03100	R·F·S	100	20	30	46	55	65	3.2	10	0.06
DBC 430	R·S	101.6	22	40	54	70	70	4.8(5.0)	12	0.11
DBC 05075	S	75				55				0.03
DBC 05100	R·F·S	100	22	35	47	65	65	4.5	10	0.08
DBC 05150	R·F·S	150				85				0.10
DBC 204	S	66.27	24	45	59	35	35	6.3(6.0)	12	0.08
DBC 450	R·F·S·M	101.6	28	50	64	70	70	6.3(6.0)	12	0.18
DBC 08150	R·F·S·M	150	28	50	64	90	90	6.3(6.0)	12	0.22
DBC 650	R·F·S·M	152.4	32	50	64	90	90	6.3(6.0)	12	0.22
DBC 10100	R·F·S·M	100	28	50	65	70	70	6.3(6.0)	12	0.16
DBC 10150	R·F·S·M	150	28	50	65	90	90	6.3(6.0)	12	0.20
DBC 214	R·S·M	101.6	35	55	73	80	80	7.9	15	0.28
DBC 6205	R·F·S·M	152.4	38	60	79	100	100	7.9	15	0.37
DBC 12200	R·F·S·M	200	38	60	79	120	120	7.9	15	0.45
DBC 12250	R·F·S·M	250				165	165			0.62
DBC 212	R·S·M	152.4	45	65	83	100	100	9.5(10.0)	15	0.49
DBC 17200	R·F·S·M	200	45	75	98	120	120	9.5(10.0)	15	0.66
DBC 17250	R·F·S·M	250				165	165			0.79

A-2 Attachment



unit : mm

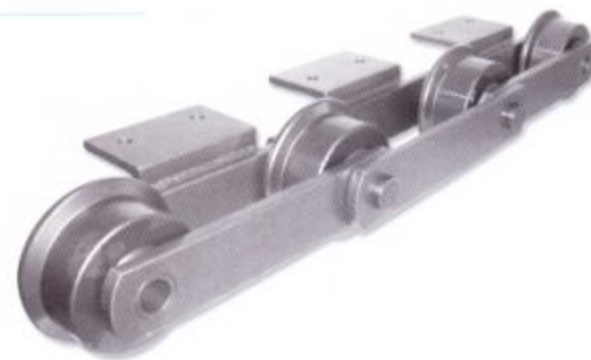
DONG BO Chain No.		Pitch P	Dimensions						Add. Weight per All* (kg)		
Basic Chain No.	Roller Type		S	C	X	N	K	T		O	
DBC 03075	R·F·S	75								0.05	
DBC 03100	R·F·S	100	20	30	46	55	65	40	3.2	10	0.06
DBC 430	R·S	101.6	22	40	54	70	70	40	4.8(5.0)	12	0.11
DBC 05075	S	75				55	30				0.07
DBC 05100	R·F·S	100	22	35	47	65	40	40	4.5	10	0.08
DBC 05150	R·F·S	150				85	60				0.10
DBC 204	S	66.27	24	45	59	55	35	35	6.3(6.0)	12	0.13
DBC 450	R·F·S·M	101.6	28	50	64	70	40	40	6.3(6.0)	12	0.18
DBC 08150	R·F·S·M	150	28	50	64	90	60	60	6.3(6.0)	12	0.22
DBC 650	R·F·S·M	152.4	32	50	64	90	60	60	6.3(6.0)	12	0.22
DBC 10100	R·S·M	100	28	50	65	70	40	40	6.3(6.0)	12	0.16
DBC 10150	R·F·S·M	150	28	50	65	90	60	60	6.3(6.0)	12	0.20
DBC 214	R·S·M	101.6	35	55	73	80	40	40	7.9	15	0.28
DBC 205	S	78.11	35	60	75	65	30	30	7.9	12	0.23
DBC 6205	R·F·S·M	152.4	38	60	79	100	60	60	7.9	15	0.37
DBC 12200	R·F·S·M	200	38	60	79	120	80	80	7.9	15	0.45
DBC 12250	R·F·S·M	250				165	125	125			0.62
DBC 212	R·S·M	152.4	45	65	83	100	60	60	9.5(10.0)	15	0.49
DBC 17200	R·F·S·M	200	45	75	98	120	80	80	9.5(10.0)	15	0.66
DBC 17250	R·F·S·M	250				165	125	125			0.79
DBC 26200	S·M	200	55	80	108	120	80	80	9.5(10.0)	15	0.78
DBC 26250	R·F·S·M	250	55	80	108	165	125	125	9.5(10.0)	15	1.07

Note)

- Numbers in brackets of the Link Plate indicates the Stainless steel 300 Series.
- X figures are approximations. Please inquire for lateral usages and in case under the conditions of interference generation.

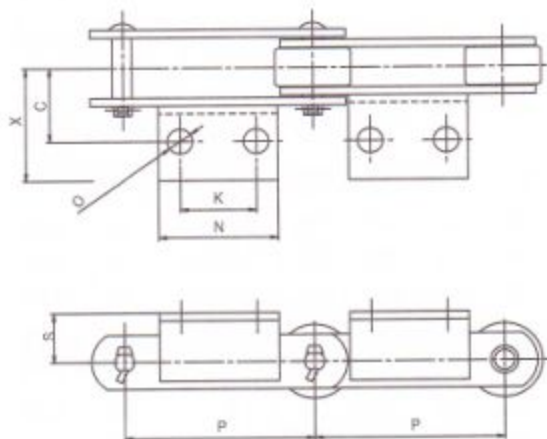
注:

- 括号内数值指不锈钢300系列链板
- X项数据为近似值，为防止产生冲突请提前垂询具体数据。



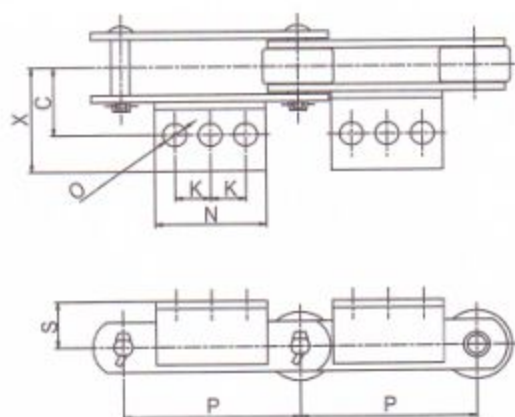
unit : mm

A-2 Attachment (Welded Type :焊接型)



DONG BO Chain No.		Pitch P	Dimensions							Compatible Angle*	Add. Weight per Att* (kg)
Basic Chain No.	Roller Type		S	C	X	N	K	O			
DBC 17300	R·F·S·M	300	45	75	110.5	220	180	15	L65 x 65 x 6	1.34	
DBC 26300	R·F·S·M	300	55	80	123.5	220	180	15	L75 x 75 x 9	2.22	
DBC 26450	R·F·S·M	450				320	280			3.26	
DBC 36300	R·F·S·M	300				160	100		L100 x 100 x 10	2.50	
DBC 36450	R·F·S·M	450	70	100	160	330	280	19		5.07	
DBC 36600	R·F·S·M	600				410	360			6.26	
DBC 52300	R·F·S	300				160	100		L100 x 100 x 13	3.10	
DBC 52450	R·F·S	450	80	120	171.4	330	280	24		6.30	
DBC 52600	R·F·S	600				410	360			7.80	
DBC 60300	R·F·N	300				170	110		L100 x 100 x 13	3.30	
DBC 60350	R·F·N	350	90	115	165	220	160	24		4.20	
DBC 60400	R·F·N	400				260	200			6.00	
DBC 90350	N	350				180	100			5.20	
DBC 90400	R·F·N	400	100	140	210	230	150	28	L130 x 130 x 15	6.60	
DBC 90500	R·F·N	500				340	260			9.80	
DBC 120400	R·N	400	120	150	220	200	120	28	L130 x 130 x 15	5.80	
DBC 120600	R·F·N	600				400	320			11.50	

A-3 Attachment (Welded Type :焊接型)



unit : mm

DONG BO Chain No.		Pitch P	Dimensions							Compatible Angle*	Add. Weight per Att* (kg)
Basic Chain No.	Roller Type		S	C	X	N	K	O			
DBC 26450	R·F·S·M	450	55	80	123.5	320	140	15	L75 x 75 x 9	3.26	
DBC 36450	R·F·S·M	450	70	100	160	330	140	19	L100 x 100 x 10	5.07	
DBC 36600	R·F·S·M	600				410	180			6.26	
DBC 52450	R·F	450	80	120	171.4	330	140	24	L100 x 100 x 13	6.30	
DBC 52600	R·F	600				410	180			7.80	
DBC 60350	R·F·N	350	90	115	165	220	80	24	L100 x 100 x 13	4.20	
DBC 60400	R·F·N	400				260	100			6.00	
DBC 90500	R·F·N	500	100	140	210	340	130	28	L130 x 130 x 15	9.80	
DBC 12060	R·F·N	600	220	150	220	400	160	28	L130 x 130 x 15	11.50	

*Compatible Angle=兼容角度

Note)

1. The Stainless steel Series uses different angle figures. Please inquire.
2. X figures are approximations. Please inquire for lateral usages and in case under the conditions of interference generation.

注.

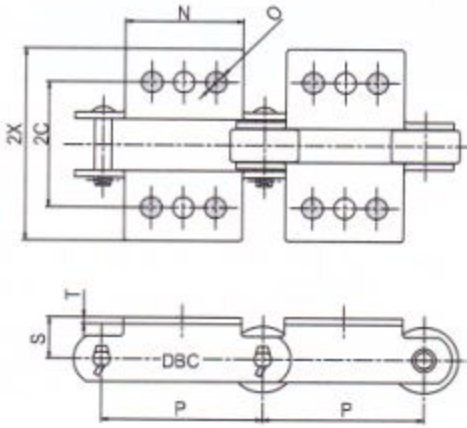
- 1: 不锈钢系列链条使用的轨道参数不同, 请垂询我公司。
- 2: X项数据为近似值, 为防止产生冲突请提前垂询具体数据。

Attachments for Standard Conveyor Chains

标准型输送链条附件

K-1 Attachment

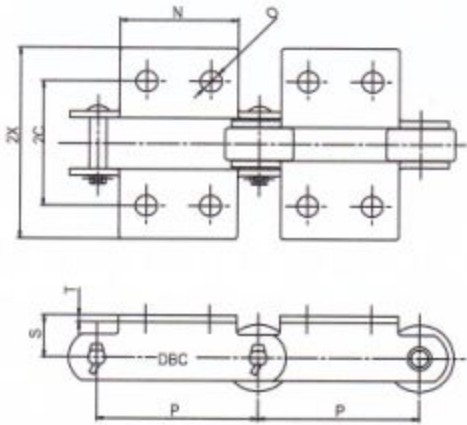
unit : mm



DONG BO Chain No.		Pitch P	Dimensions						Add Weight per Att. (kg)
Basic Chain No.	Roller Type		S	C	X	N	T	O	
DBC 03075	R·F·S	75	20	60	92	55	3.2	10	0.10
	R·F·S	100							0.12
DBC 430	R·S	101.6	22	80	108	70	4.8(5.0)	12	0.22
	S	75							0.06
DBC 05100	R·F·S	100	22	70	94	65	4.5	10	0.16
	R·F·S	150							0.20
DBC 204	S	66.27	24	90	118	35	6.3(6.0)	12	0.16
DBC 450	R·F·S·M	101.6	28	100	128	70	6.3(6.0)	12	0.36
DBC 08150	R·F·S·M	150	28	100	128	90	6.3(6.0)	12	0.44
DBC 650	R·F·S·M	152.4	32	100	128	90	6.3(6.0)	12	0.44
DBC 10100	R·S·M	100	28	100	130	70	6.3(6.0)	12	0.32
	R·F·S·M	150							0.40
DBC 214	R·S·M	101.6	35	110	146	80	7.9	15	0.56
DBC 6205	R·F·S·M	152.4	38	120	158	100	7.9	15	0.74
DBC 12200	R·F·S·M	200	38	120	158	120	7.9	15	0.90
	R·F·S·M	250							1.24
DBC 212	R·S·M	152.4	45	130	166	100	9.5(10.0)	15	0.98
DBC 17200	R·F·S·M	200	45	150	196	120	9.5(10.0)	15	1.32
	R·F·S·M	250							1.58

K-2 Attachment

unit : mm



DONG BO Chain No.		Pitch P	Dimensions						Add Weight per Att. (kg)	
Basic Chain No.	Roller Type		S	2C	2X	N	K	T		O
DBC 03075	R·F·S	75	20	60	92	55	30	3.2	10	0.10
	R·F·S	100								65
DBC 430	R·S	101.6	22	80	108	70	40	4.8(5.0)	12	0.22
	S	75								55
DBC 05100	R·F·S	100	22	70	94	65	40	4.5	10	0.16
	R·F·S	150								85
DBC 204	S	66.27	24	90	118	55	35	6.3(6.0)	12	0.26
DBC 450	R·F·S·M	101.6	28	100	128	70	40	6.3(6.0)	12	0.36
DBC 08150	R·F·S·M	150	28	100	128	90	60	6.3(6.0)	12	0.44
DBC 650	R·F·S·M	152.4	32	100	128	90	60	6.3(6.0)	12	0.44
DBC 10100	R·S·M	100	28	100	130	70	40	6.3(6.0)	12	0.32
	R·F·S·M	150								90
DBC 214	R·S·M	101.6	35	110	146	80	40	7.9	15	0.56
DBC 205	S	78.11	35	120	150	65	30	7.9	12	0.46
DBC 6205	R·F·S·M	152.4	38	120	158	100	60	7.9	15	0.74
DBC 12200	R·F·S·M	200	38	120	158	120	80	7.9	15	0.90
	R·F·S·M	250								165
DBC 212	R·S·M	152.4	45	130	166	100	60	9.5(10.0)	15	0.98
DBC 17200	R·F·S·M	200	45	150	196	120	80	9.5(10.0)	15	1.32
	R·F·S·M	250								165
DBC 26200	S·M	200	55	160	216	120	80	9.5(10.0)	15	1.56
	R·F·S·M	250								160

Note)

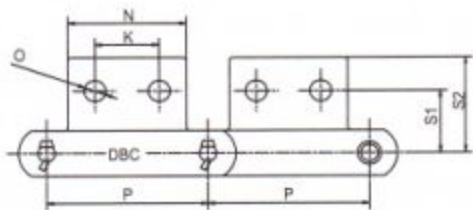
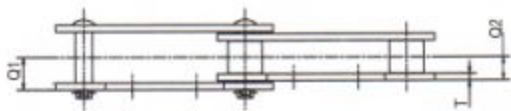
- Numbers in brackets of the Link Plate indicates the Stainless steel 300 Series.
- X, 2X figures are approximations. Please inquire for lateral usages and in case under the conditions of interference generation.

注:

- () 内数值指不锈钢300系列链板
- X, 2X项数据为近似值, 为防止产生冲突请提前垂询具体数据。

unit : mm

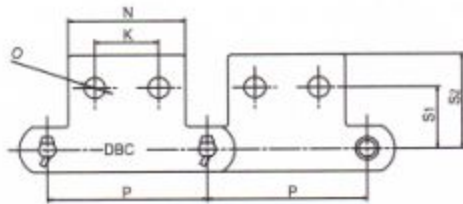
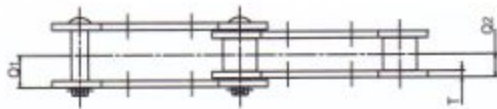
SA-2 Attachment



DONG BO Chain No.		Pitch P	Dimensions								Add. Weight per 10" Att(kg)
Basic Chain No.	Roller Type		S ₁	S ₂	Q ₁	Q ₂	K	N	T	O	
DBC 03075	R·S	75	33	49	15.5	11.5	30	55	3.2	10	0.05
	03100	R·S									
DBC 430	R·S	101.6	37.6	51.6	22(22.5)	16(16.5)	40	70	4.8(5.0)	12	0.11
DBC 05100	R·S	100	33.4	50.7	21	15.5	40	65	4.5	10	0.08
	05150	R·S									
DBC 450	R·S·M	101.6	47.6	60.7	27(26.5)	20(19.5)	40	70	6.3(6.0)	12	0.18
DBC 08150	R·S·M	150	46.1	58.7	27(26.5)	20(19.5)	60	90	6.3(6.0)	12	0.22
DBC 650	R·S·M	152.4	50	63	28.5(28)	21.5(21)	60	90	6.3(6.0)	12	0.22
DBC 10100	R·S·M	100	46.1	61	28.5(28)	21.5(21)	40	70	6.3(6.0)	12	0.16
	10150	R·S·M									
DBC 214	R·S·M	101.6	50	70	32.5	23.5	40	80	7.9	15	0.28
DBC 6205	R·S·M	152.4	55	75.7	35.5	26.5	60	100	7.9	15	0.37
DBC 12200	R·S·M	200	55	75.7	35.5	26.5	80	120	7.9	15	0.45
	12250	R·S·M									
DBC 212	R·S·M	152.4	60	83.6	38(39.5)	28(28.5)	60	100	9.5(10.0)	15	0.49

unit : mm

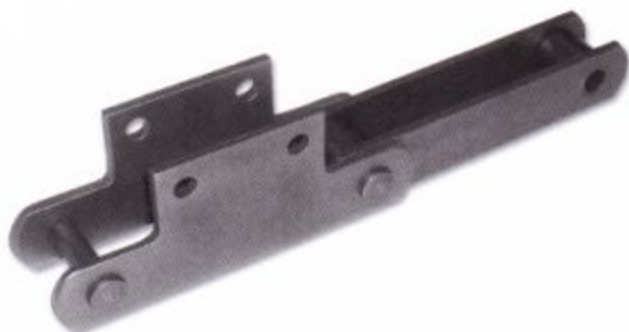
SK-2 Attachment



Note)
Numbers in brackets of the Link Plate indicates the
Stainless steel 300 Series.

注：
()内数值指不锈钢300系列链板

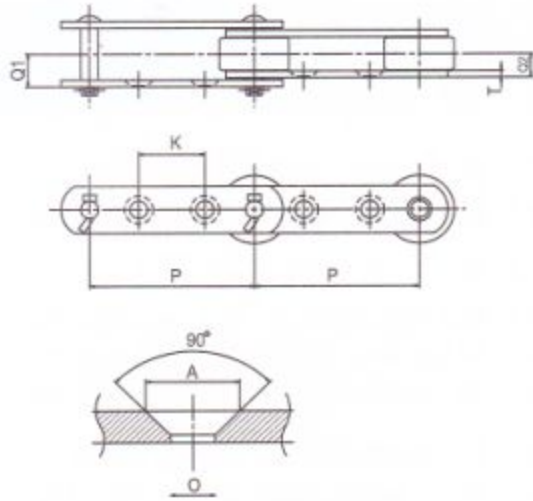
DONG BO Chain No.		Pitch P	Dimensions								Add. Weight per 10" Att(kg)
Basic Chain No.	Roller Type		S ₁	S ₂	Q ₁	Q ₂	K	N	T	O	
DBC 03075	R·S	75	33	49	15.5	11.5	30	55	3.2	10	0.10
	03100	R·S									
DBC 430	R·S	101.6	37.6	51.6	22(22.5)	16(16.5)	40	70	4.8(5.0)	12	0.22
DBC 05100	R·S	100	33.4	50.7	21	15.5	40	65	4.5	10	0.16
	05150	R·S									
DBC 450	R·S·M	101.6	47.6	60.7	27(26.5)	20(19.5)	40	70	6.3(6.0)	12	0.36
DBC 08150	R·S·M	150	46.1	58.7	27(26.5)	20(19.5)	60	90	6.3(6.0)	12	0.44
DBC 650	R·S·M	152.4	50	63	28.5(28)	21.5(21)	60	90	6.3(6.0)	12	0.44
DBC 10100	R·S·M	100	46.1	61	28.5(28)	21.5(21)	40	70	6.3(6.0)	12	0.32
	10150	R·S·M									
DBC 214	R·S·M	101.6	50	70	32.5	23.5	40	80	7.9	15	0.56
DBC 6205	R·S·M	152.4	55	75.7	35.5	26.5	60	100	7.9	15	0.74
DBC 12200	R·S·M	200	55	75.7	35.5	26.5	80	120	7.9	15	0.90
	12250	R·S·M									
DBC 212	R·S·M	152.4	60	83.6	38(39.5)	28(28.5)	60	100	9.5(10.0)	15	0.98



Attachments for Standard Conveyor Chains

标准型输送链条附件

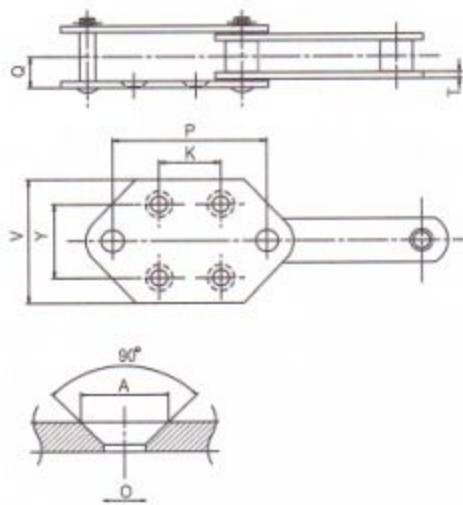
G-2 Attachment



unit : mm

DONG BO Chain No.		Pitch P	Dimensions					
Basic Chain No.	Roller Type		K	T	Q1	Q2	A	O
DBC 03075 03100	R·S	75	30	3.2	15.5	11.5	13.5	8
	R·F·S	100	50					
DBC 05100 05150	R·S	100	40	4.5	21	15.5	15	10
	R·F·S	150	60					
DBC 08150	R·F·S·M	150	60	6.3	27	20	20	12
DBC 650	R·F·S·M	152.4	60	6.3(6)	28.5(28)	21.5(21)	20	12
DBC 10100 10150	S·M	100	30	6.3(6)	28.5(28)	21.5(2.1)	20	12
	R·F·S·M	150	60					
DBC 6205	R·F·S·M	152.4	50	7.9	35.5	26.5	26	15
DBC 12200 12250	R·F·S·M	200	80	7.9	35.5	26.5	26	15
	R·F·S·M	250	125					
DBC 17200 17250 17300	R·F·S·M	200	70					
	R·F·S·M	250	110	9.5(10.0)	45.5(46.5)	35(35.5)	26	15
	R·F·S·M	300	150					
DBC 26300 26450	R·F·S·M	300	140	9.5(10.0)	48(49)	38(38.5)	26	15
	R·F·S·M	450	220					
DBC 36450 36600	R·F·S·M	450	220	12.7	60	46	32	19
	R·F·S·M	600	300					
DBC 52450 52600	R·F·S	450	200	16	71.5	45.5	38	24
	R·F·S	600	300					

G-4 Attachment



unit : mm

DONG BO Chain No.		Pitch P	Dimensions							Add. Weight per Att. x 2L (kg/m)*
Basic Chain No.	Roller Type		V	K	Y	T	Q	A	O	
DBC 05100 05150	S	100	80	50	50	4.5	21	15	10	4.6
	S	150	70	70						4.1
DBC 650	S M	152.4	110	75	70	6.3	28.5	20	12	7.2(7.6)
DBC 10150	S M	150	110	75	70	6.3	28.5	20	12	7.2(7.4)
DBC 6205	S M	152.4	110	75	70	7.9	35.5	26	15	11.0(11.3)
DBC 12200	S M	200	110	100	70	7.9	35.5	26	15	10.2(10.5)
DBC 17200 17250	S M	200	120	100	80	9.5	45.5	26	15	14.0(14.6)
	S M	250	150	140	100					14.5(15.0)
DBC 26200 26250 26300	S M	200	120	100	80	9.5	48	26	15	17.5(18.5)
	S M	250	150	140	100					17.6(18.4)
	S M	300	150	180	100					16.7(17.4)
DBC 36250 36300	S M	250	150	140	100	12.7	60	32	19	27.6(28.6)
	S M	300	180	180						26.2(27.1)

*Add. Weight per Att. = additional Weight per Attachment at every second link spacing

*Add. Weight per Att. = 每隔2节加一个附件的重量