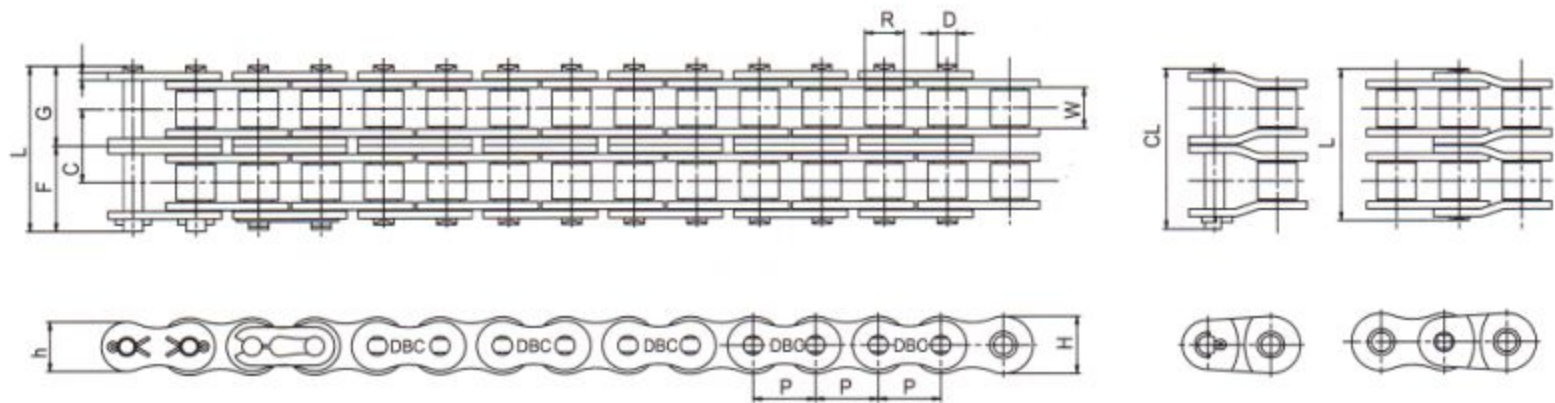


ANSI Standard Roller Chain - Double Strand

标准传动滚子链条—双排



unit : mm

DONGBO Chain No.			Pitch	Inner width	Roller Dia	Plate			Pin				Transverse pitch	Min. Breaking Load	Max. Allowable Load	Approx Weight	
Standard Designation	ANSI No	ISO No				T	H _{max}	h _{max}	D _{max}	L	F	G					CL
			P	W _{min}	R _{max}												
DBC	25-2	04C-2	6.35	3.10	*3.30	0.75	6.0	5.2	2.31	14.0	7.0	8.0		6.4	740	110	0.27
DBC	35-2	06C-2	9.525	4.68	*5.08	1.25	9.0	7.8	3.59	21.8	10.9	11.9	24.5	10.1	1,780	370	0.69
DBC	40-2	08A-2	12.70	7.85	7.92	1.5	12.0	10.4	3.98	30.9	15.45	17.15	33.5	14.4	3,100	630	1.27
DBC	50-2	10A-2	15.875	9.40	10.16	2.0	15.0	13.0	5.09	38.7	19.35	21.15	41.8	18.1	4,900	1,100	2.07
DBC	60-2	12A-2	19.05	12.57	11.91	2.4	18.1	15.6	5.96	48.5	24.25	26.75	52.6	22.8	6,980	1,530	3.04
DBC	80-2	16A-2	25.40	15.75	15.88	3.2	24.1	20.8	7.94	61.8	30.9	33.9	67.5	29.3	12,500	2,550	5.27
DBC	100-2	20A-2	31.75	18.90	19.05	4.0	30.1	26.0	9.54	75.4	37.7	40.8	81.5	35.8	19,480	3,910	7.85
DBC	120-2	24A-2	38.1	25.22	22.23	4.8	36.2	31.2	11.11	95.2	47.6	51.6	103.2	45.4	28,000	5,270	11.70
DBC	140-2	28A-2	44.45	25.22	25.40	5.6	42.2	36.4	12.71	102.7	51.35	56.15	112.3	48.9	37,940	6,970	14.83
DBC	160-2	32A-2	50.80	31.55	28.58	6.4	48.2	41.6	14.29	122.3	61.15	66.15	132.2	58.5	49,920	9,180	20.04
DBC	180-2	-	57.15	35.48	35.71	7.1	54.2	46.8	17.46	137.5	68.75	75.35	151.1	65.8	62,900	10,540	26.52
DBC	200-2	40A-2	63.50	37.85	39.68	8.0	60.3	52.0	19.85	149.7	74.85	80.65	161.2	71.6	77,900	12,410	32.63
DBC	240-2	48A-2	76.20	47.35	47.63	9.5	72.4	62.4	23.81	183.8	91.9	99.4	198.4	87.8	112,340	17,170	48.1