

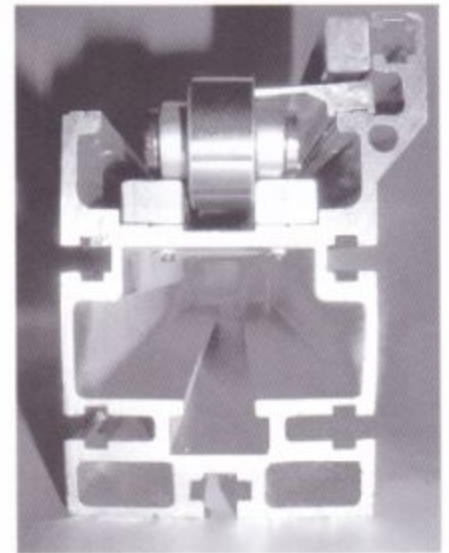
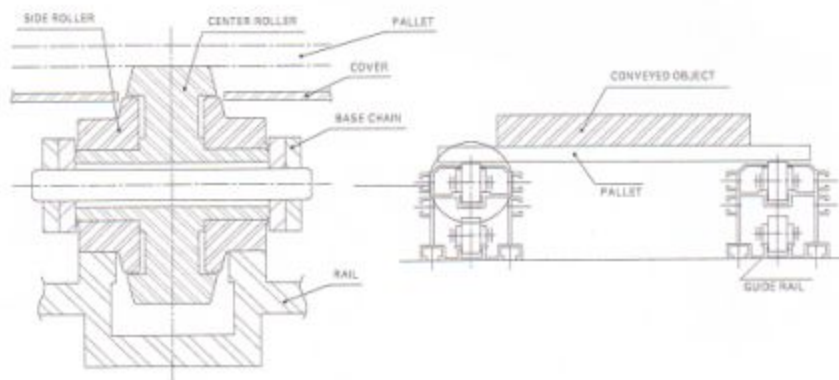
Double Plus Chains

倍速链条

Double Plus Chain (also called Triple Speed chains) are used typically on accumulating assembly line conveyors. This chain's two rollers rotate identically according to the frictional force between the large and small rollers. Items are conveyed about 2.5 times faster than the speed of the chain (the chain speed according to the ratio of the roller's outer diameter). In addition, when braking forces are applied, slip occurs between the large and small rollers, making the chain to be conveyed freely. Double Plus Chain are available with 'snap covers' to keep particles out, in resin rollers and with protective coatings (nickel, chromium plating).

倍速链条主要用于流水线作业，这种链条依靠大滚子与小滚子之间的摩擦力使其同时旋转，使货物以超过2.5倍的速度传送。（链速取决于滚子外径）。当使用链条时，大滚子与小滚子之间会产生反作用力，从而使链条更加快速流畅地运行，倍速链条还可以加装中心盖板，防止细小部件脱落影响流水线正常运行。

Construction of Double Plus Chain 倍速链条结构



Advantages of Double Plus Chain 倍速链条性能

- High speed conveying
- Quite
- Improved stability
- Quick start up : through standardized guide rails and sprockets

高速度：
低噪音
高度的稳定性
设计制作方法：运用链传动及链轮都有相关标准，因此便于设计与制造

Variations 优点

- Standard Type
- Low Noise Type (LN Type)
- Double Plus Chain with Snap Cover
- Double Plus Chain with Center Cover

标准型
低噪音
连接部位盖板
中心部位盖板



Designation of Double Plus Chain

