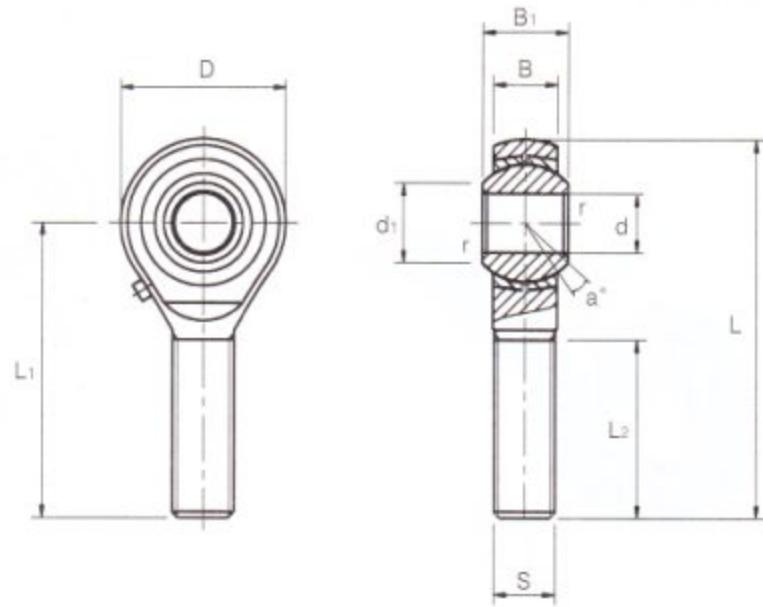


ROD ENDS

급유형, mm치수, 스티나사
 STEEL ON COMPOSITE MATERIAL
 METRIC DIMENSION
 MALE THREAD



JM



| 호칭번호 (Bearing No.) | 질량 (Mass) gr. | 주요 치수 (Dimensions) mm | | | | | | | | | | 요동 각도 (Tilting angle) a° | 볼 직경 (Spherical Diameter) mm | 정부하용량 (Basic Static Load Ratings) Co Kg |
|-----------------------|---------------------|-----------------------|----------------------------|------|------|----|------|------------|-------------|----|-----|--------------------------------|------------------------------------|--------------------------------------------------|
| | | d | 나사 (Threads) KS 2급/S | D | B | B1 | d1 | L (max) | L1 (max) | L2 | r | | | |
| JM 5 | 12.5 | 5 | M 5×0.8 | 16 | 6 | 8 | 7.7 | 42 | 34 | 20 | 0.5 | 13 | 11.1 | 350 |
| JM 6 | 19 | 6 | M 6×1.0 | 18.5 | 6.75 | 9 | 9 | 47.5 | 38.3 | 22 | 0.5 | 13 | 12.7 | 500 |
| JM 8 | 32 | 8 | M 8×1.25 | 23 | 9 | 12 | 10.4 | 54.5 | 43 | 25 | 0.5 | 13 | 15.87 | 700 |
| JM 10 | 54 | 10 | M10×1.5 | 26.5 | 10.5 | 14 | 12.9 | 62.3 | 49 | 29 | 0.5 | 13 | 19.05 | 1,100 |
| JM 12 | 85 | 12 | *M12×1.25 M12×1.75 | 32 | 12 | 16 | 15.8 | 73.3 | 57.3 | 33 | 0.5 | 13 | 22.5 | 1,700 |
| JM 14 | 126 | 14 | M14×2.0 | 34 | 13.5 | 19 | 16.9 | 80.8 | 63.8 | 36 | 0.5 | 15 | 25.4 | 2,100 |
| JM 16 | 185 | 16 | M16×2.0 | 38 | 15 | 21 | 19.3 | 87.3 | 68.3 | 40 | 0.5 | 15 | 28.5 | 2,550 |
| JM 18 | 260 | 18 | M18×1.5 | 43 | 16.5 | 23 | 21.9 | 95.3 | 73.8 | 44 | 0.5 | 15 | 31.6 | 3,000 |
| JM 20 | 340 | 20 | M20×1.5 | 46 | 18 | 25 | 23.9 | 103.5 | 80.5 | 47 | 0.5 | 15 | 34.5 | 3,500 |
| JM 22 | 435 | 22 | M22×1.5 | 54 | 20 | 28 | 25.8 | 112.8 | 86.8 | 51 | 0.5 | 15 | 38.1 | 4,200 |
| * JM 24 | 650 | 25 | M24×2.0 | 64 | 22 | 31 | 29.8 | 128.2 | 98.8 | 57 | 0.5 | 15 | 43 | 7,400 |
| JM 25 | | | M25×1.5 | | | | | | | | | | | |
| JM 30 | 910 | 30 | M30×2.0 | 73 | 21 | 32 | 34.4 | 147.8 | 111.3 | 66 | 0.5 | 15 | 47 | 9,100 |
| JM 35 | 1,440 | 35 | M36×2.0 | 82 | 23 | 35 | 39.8 | 176.2 | 135.2 | 80 | 0.5 | 15 | 53 | 11,400 |

- ▶ 註 JM30~JM35는 스페리칼 플레인을 끼워 넣으므로 중하중을 받을 수 있습니다.
 JM30 and JM35 are suitable for the accommodation of heavy loads because they are supplied equipped with spherical plain bearings.
- ▶ 註 우나사는 "R"이고 백색 도금으로 되어 있습니다.
 "R" represents the right thread of which the color of the body is white.
 좌나사는 "L"이고 황색 도금으로 되어 있습니다.
 "L" represents the left thread of which the color of the body is yellow.