



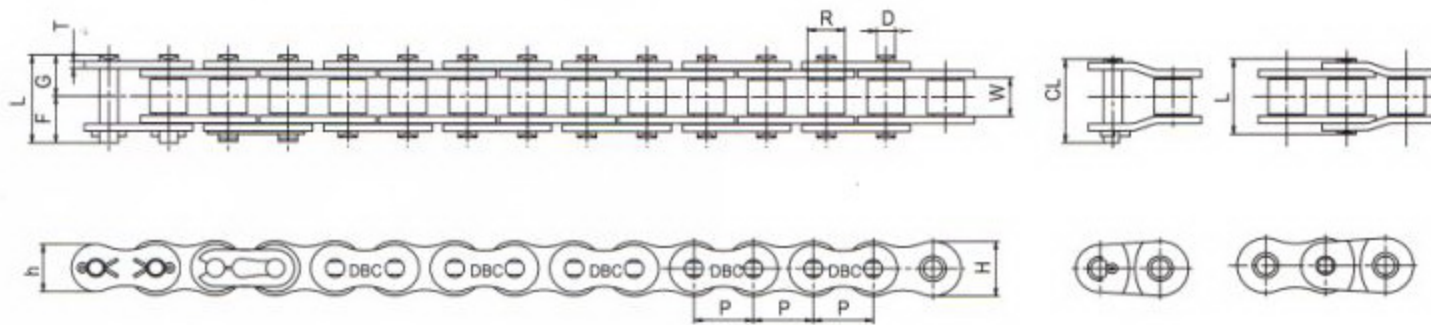
## ANSI Standard Roller Chain - Single Strand

### 标准传动滚子链条—单排



This is a standard for power transmission roller chain and complies to  
 Korean Standard KS B 1407  
 American Standard ANSI B 29.1  
 Japanese Standard JIS B 1801  
 International Standard ISO R606 (Type-A).  
 Our high quality DBC25-240 chains has certificate <KS><JIS>.

标准的传动滚子链条符合  
 韩国标准: KS B 1407  
 美国标准: ANSI B 29.1  
 日本标准: JIS B 1801  
 国际标准: ISO R606(TYPE-A)  
 东宝生产的DBC25-240的链条符合, <KS> <JIS>



unit : mm

DONG BO Chain No.	Standard Designation	ANSI No.	ISO No.	Pitch	Inner width	Roller Dia	Plate			Pin				Transverse pitch	Min. Breaking Load	Max. Allowable Load	Approx Weight
							P	W <sub>min</sub>	R <sub>max</sub>	T	H <sub>max</sub>	h <sub>max</sub>	D <sub>max</sub>				
DBC 25 -1	04C -1	6.35	3.10	*3.30	0.75	6.0	5.2	2.31	7.6	3.8	4.8		6.4	370	65	0.14	
DBC 35 -1	06C -1	9.525	4.68	*5.08	1.25	9.0	7.8	3.59	11.7	5.85	6.85	13.5	10.1	890	220	0.33	
DBC 41 -1	-	12.70	6.25	7.77	1.25	9.9	8.5	3.59	13.5	6.75	7.95	15.1		680	230	0.41	
DBC 40 -1	08A -1	12.70	7.85	7.92	1.5	12.0	10.4	3.98	16.5	8.25	9.95	18.0	14.4	1,550	370	0.64	
DBC 50 -1	10A -1	15.875	9.40	10.16	2.0	15.0	13.0	5.09	20.6	10.3	12.0	22.5	18.1	2,450	650	1.04	
DBC 60 -1	12A -1	19.05	12.57	11.91	2.4	18.1	15.6	5.96	25.7	12.85	15.25	28.2	22.8	3,490	900	1.53	
DBC 80 -1	16A -1	25.40	15.75	15.88	3.2	24.1	20.8	7.94	32.5	16.25	19.25	36.6	29.3	6,250	1,500	2.66	
DBC 100 -1	20A -1	31.75	18.90	19.05	4.0	30.1	26.0	9.54	39.5	19.75	22.85	44.4	35.8	9,740	2,300	3.99	
DBC 120 -1	24A -1	38.1	25.22	22.23	4.8	36.2	31.2	11.11	49.8	24.9	28.9	55.8	45.4	14,000	3,100	5.93	
DBC 140 -1	28A -1	44.45	25.22	25.40	5.6	42.2	36.4	12.71	53.8	26.9	31.7	60.5	48.9	18,970	4,100	7.49	
DBC 160 -1	32A -1	50.80	31.55	28.58	6.4	48.2	41.6	14.29	63.7	31.85	36.85	71.0	58.5	24,960	5,400	10.10	
DBC 180 -1	-	57.15	35.48	35.71	7.1	54.2	46.8	17.46	71.3	35.65	42.45	80.6	65.8	31,450	6,200	13.45	
DBC 200 -1	40A -1	63.50	37.85	39.68	8.0	60.3	52.0	19.85	78.0	39.0	44.8	87.3	71.6	38,950	7,300	16.49	
DBC 240 -1	48A -1	76.20	47.35	47.63	9.5	72.4	62.4	23.81	95.8	47.9	55.5	106.7	87.8	56,170	10,100	24.5	

Note) Spring Clip type connecting link is applied to DBC 60 and smaller and Cotter type applied to DBC 80 and larger.  
 注: 卡簧型接头用于 DBC 60 及以下型号的链条, 开口销型接头用于 DBC 80 及以上型号的链条。